



Introducing all new
ROBUSTA Pro
Surgical Operating Table



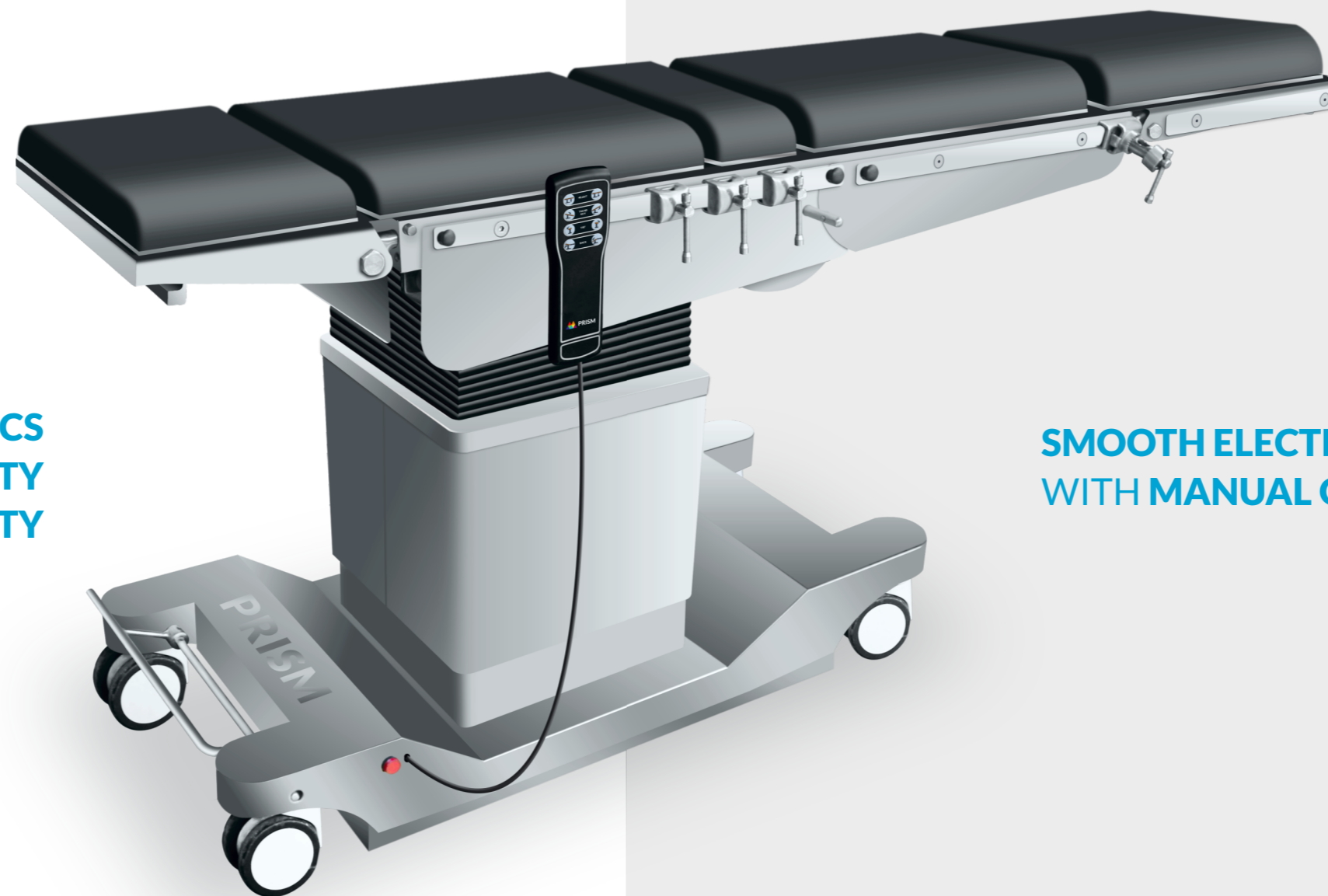
ROBUSTA

Prism Surgicare takes immense pride in working together with some of the leading clinicians in India for the development of our latest Product line: **The Robusta Pro OT Table series**. Following the same philosophy used when we developed our first Surgical lights, Prism is confident that this principle of working with clinicians and addressing their concerns and requirements at the time of development will ensure that the Robusta OT Table series will also be a successful product in the medical devices market in India. Our constant pursuit of

clinical excellence, and a lot of testing has resulted in a tried and tested product which will facilitate the work inside the operating room and help to increase the safety and comfort of the patient.

The Robusta OT Table, true to its name, can take a heavy load of upto 250 kgs in any position. The modularity of the attachments ensure that it can be adapted to match the size of the patient. A longitudinal slide of upto 300 mm ensure it is even more versatile for any procedure.

ERGONOMICS
RIGIDITY
RELIABILITY

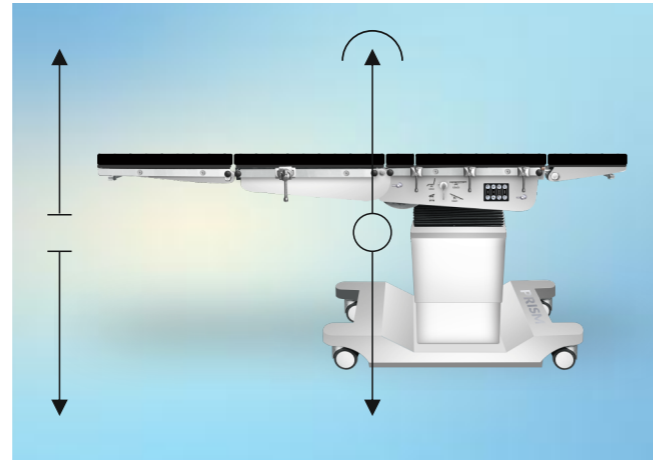


SMOOTH ELECTRIC DRIVE TABLE
WITH MANUAL OVERRIDE

Premium features, affordable price. Modular design enabling universal clinical application

Motorised movements with manual backup

All motions of the Robusta are driven by an electrical drive actuator. Every motion, height up-down, longitudinal motion, trendelenburg, lateral tilt etc. all can also be adjusted with a manual override switch. This makes the design tropicalised and relieves the clinician of the hassle of being dependent on any external factors during a surgical procedure.



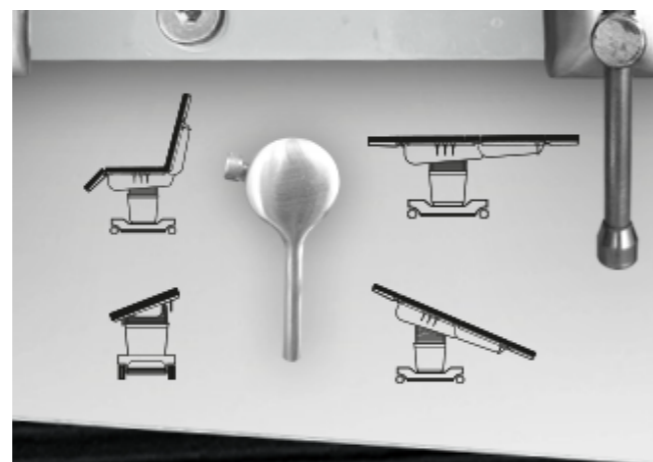
Unrestricted C-arm Access

Modularity of the attachments allow for the table to be used in various versions to have maximum access for the C-arm for a wide range of faculties. Depending on the type of surgical procedure, the Robusta OT Table can be rearranged to give maximum C-arm access to the clinician.



Manual Override

Considering the conditions in India, the Robusta OT Table has an inbuilt manual override switch as standard across the range to ensure 0 failure of the system and that the clinician can continue the clinical procedure even in the worst case of battery getting completely drained out.



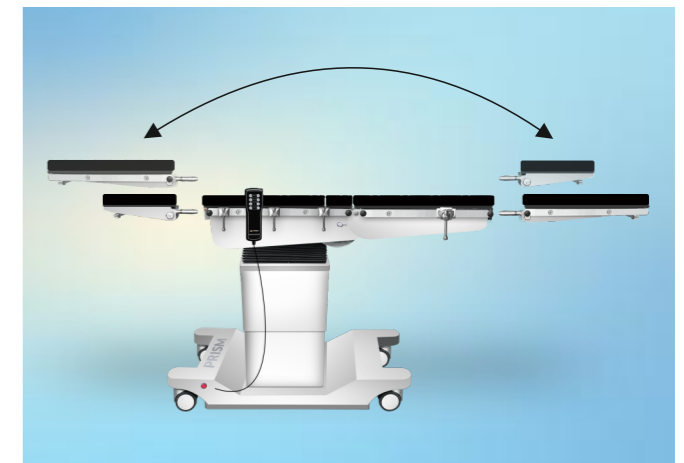
Rugged Design, heavy load capacity

The Robusta OT Table has been designed to be used in the subcontinental conditions. The entire table is made out of SS 304 ensuring long term rust free product. The table has also been designed and tested to hold upto 250 kgs of weight at any position, giving it the necessary Robustness for any clinical procedure.



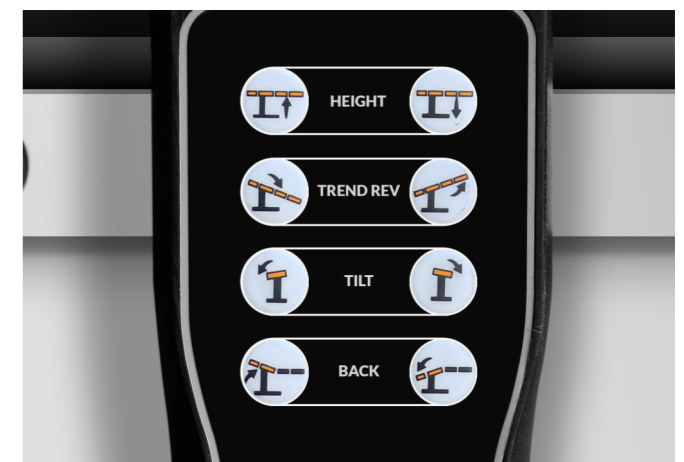
Interchangeable head and leg section

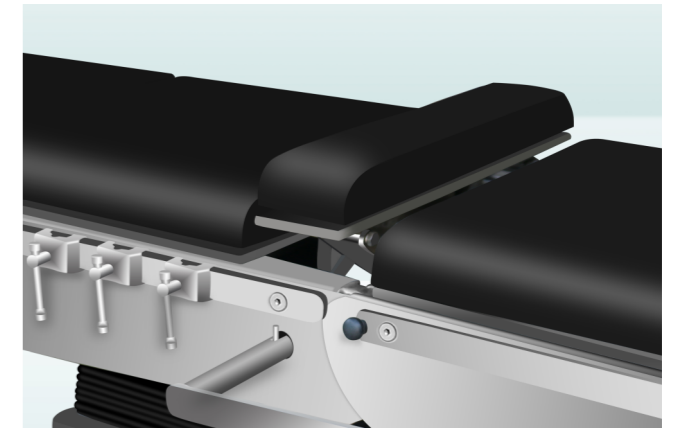
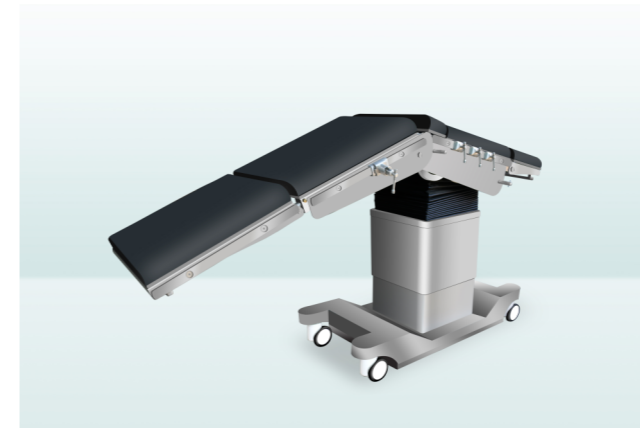
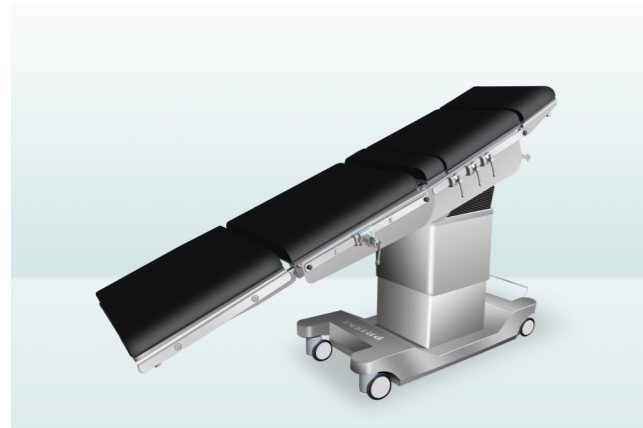
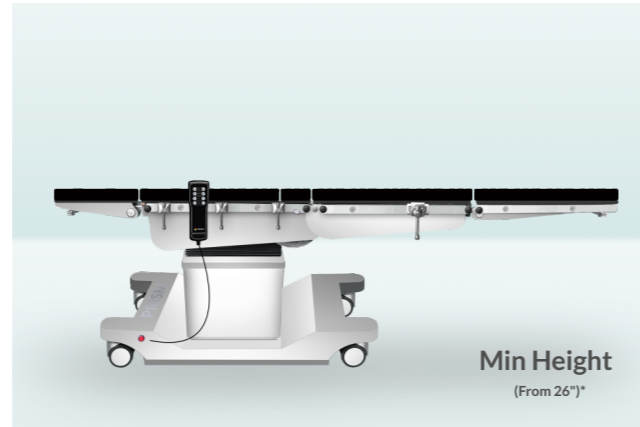
The head and leg section of the robusta OT Table can be interchanged to suit the requirement of the clinical procedure and to suit the surgeons comfort. The attachment can be easily removed using our Smart Locking mechanism with a small push of a button.



Multiple positions can be easily achieved using memory function

The Robusta OT Table come with an optional advanced controller that can multiple positions in its memory as per the surgeons comfort and surgical requirements.





Simple Press-fit Mechanism



Simple Press & Move

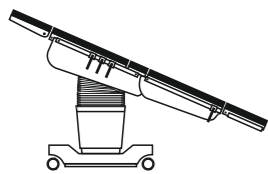


ROBUSTA Pro

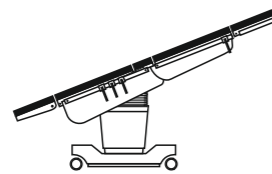
Technical Specification

Standard Height adjustment	30" to 42" (Lift adjustable from 12" to 18")
Reverse Trendelberg / Trandelberg	30° each side
Lateral Tilt	25° / 15°
Back Up Back Down	90° up, 40° down
Longitudinal Slide	300 mm
Head Up	80°
Head Down	90°
Leg Down	90°
Max Load	250 kg
OT Table weight	250 kg
Customisable min Height	Upto 26"

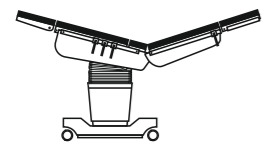
Operating Table Functions



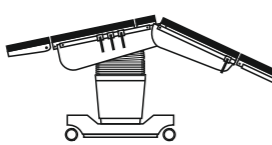
01. Trend Rev



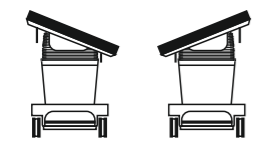
02. Reverse Trend Rev



03. Flex



04. Reflex



05. Tilt



06. Chair

For information on Accessories & Attachments for various clinical functions please contact company representative





Corporate Office



B-2/1, 8th Floor, Ashar IT Park, Wagle Estate,
Rd. No.16, Thane (W) 400 604, India
Tel : 022-2081 3711 | 022-2543 3711
info@matrixmedicals.in

Factory Address

R376, TTC Industrial estate, MIDC, Rabale,
Navi Mumbai, 400 701, India.
Tel : 022 2172 0091
priyal@prismsurgicare.com

Customer Care No.+91 93200 51023

www.prismsurgicare.com

